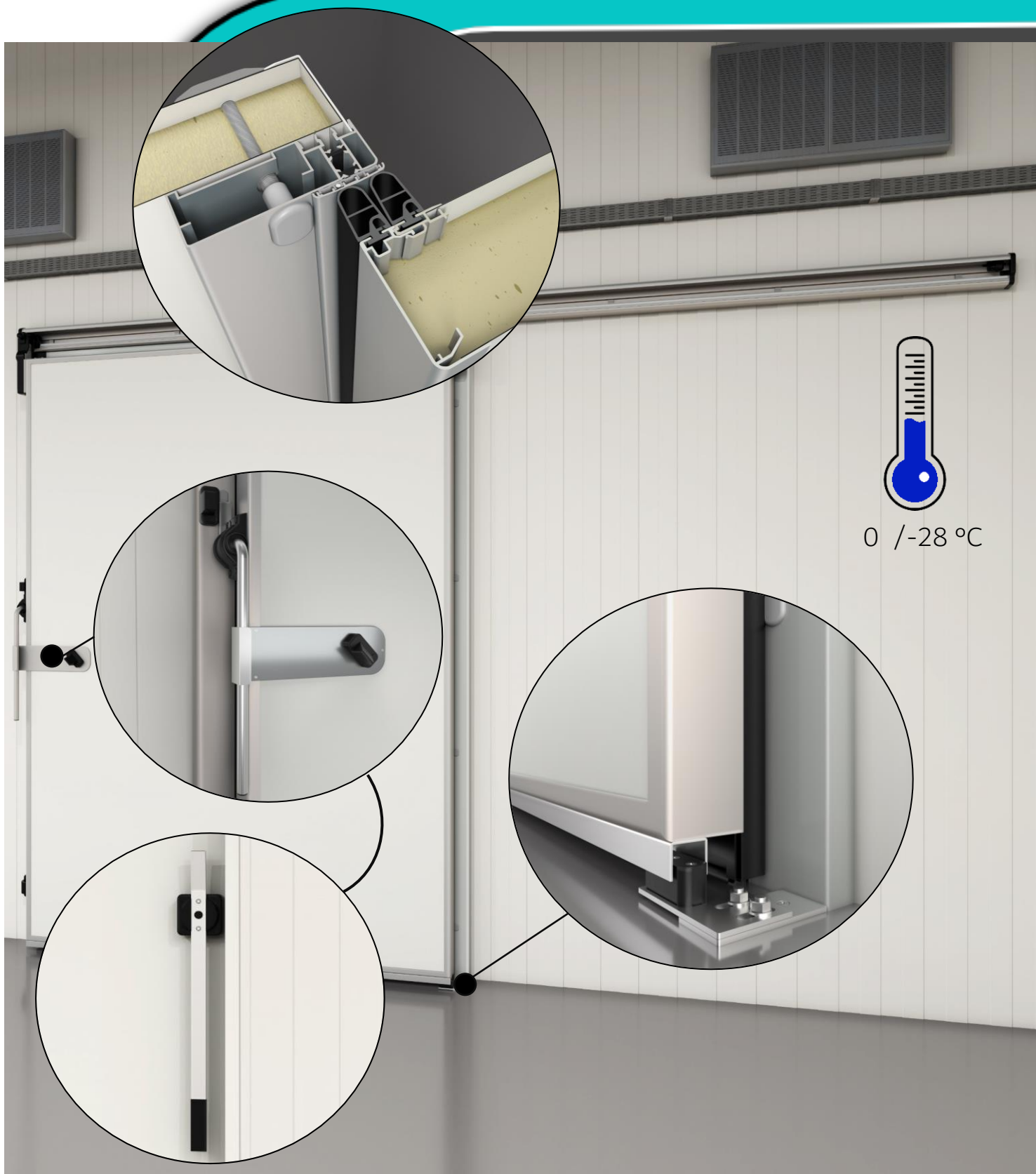


Mod. 800 BTI



Mod. 800 BTI

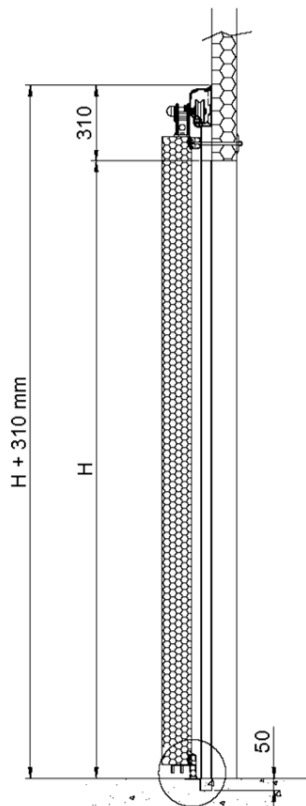


U=1,0 W/m² * K tested by:

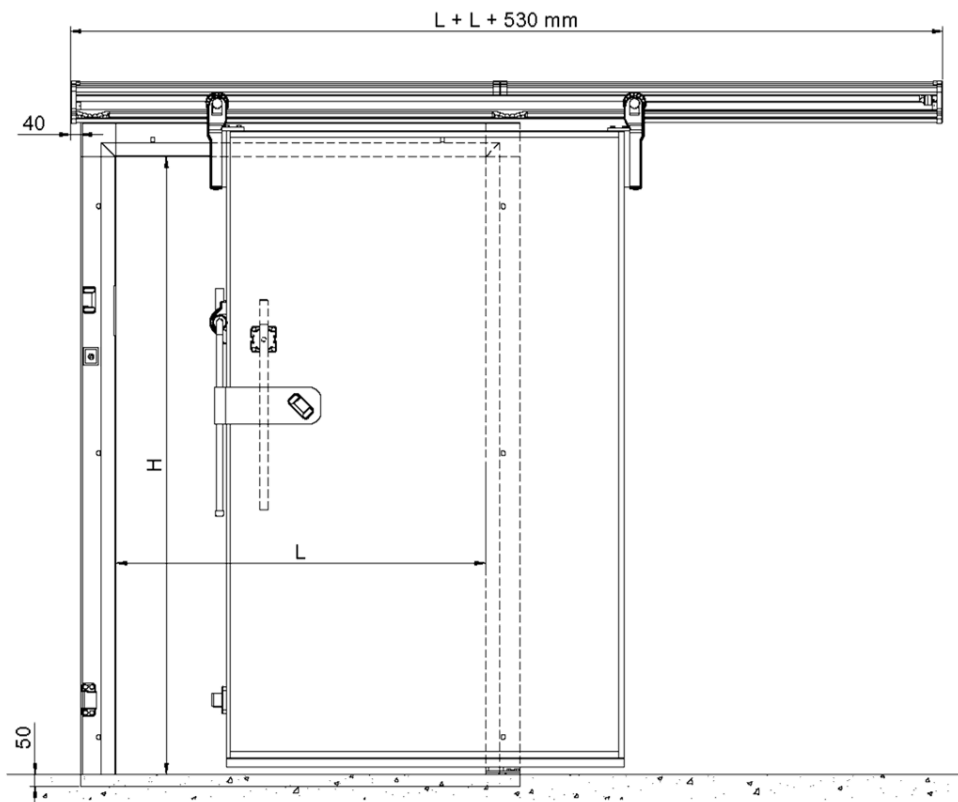


ISTITUTO
GIORDANO
Qualità al Plurale.

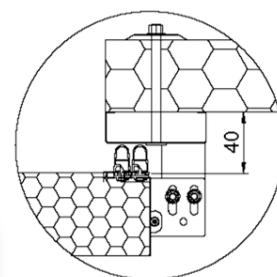
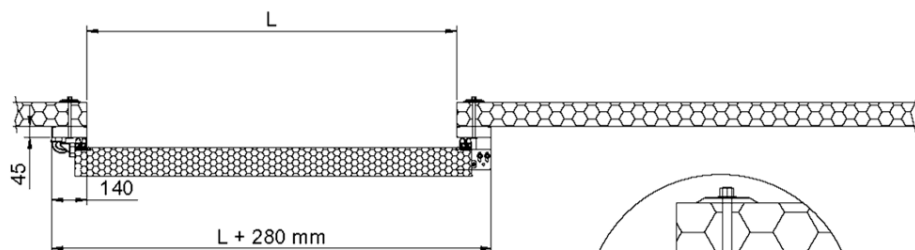
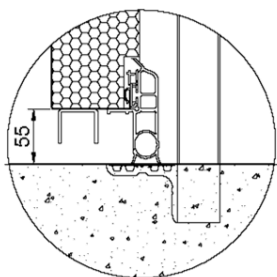
Mod. 800 BTI



Threshold «FP»



L = Free passage width
 H = Free passage height



TECHNICAL FEATURES

- 90 mm or 120 mm thick aluminum door leaf
- Internal and external coating in white plastic coated metalsheet Similar Ral 9003
- Lower and perimetral EPDM gasket
- Front fixing flat aluminum frame (140 mm x thick 45 mm)
- Door leaf injected with polyurethane foam "PUR" CFC free
- Heating cable apply into the frame or into the gasket